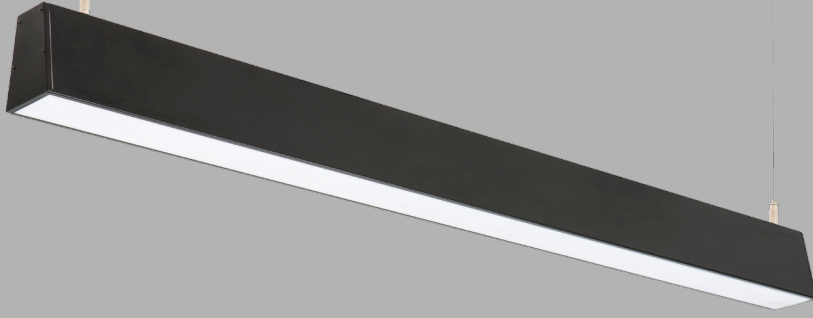


VZC582



Ürün Özelliği :

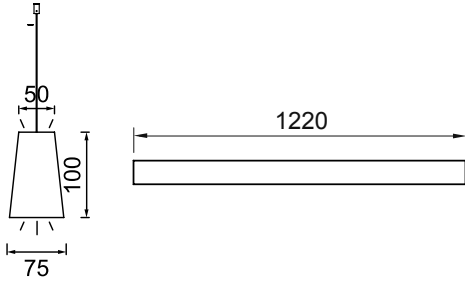
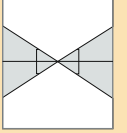
Alüminyum üzeri elektrostatik toz boyalı direkt-endirekt lineer sarkıt armatür.

Isıya dayanıklı opal pleksi.

M.Gri

Beyaz

Siyah



AYGIT KODU

VZC582

İŞIK KAYNAĞI

SMD LED

GÜÇ/LÜMEN

24W + 20W LED
5280 lm.

